



Pharmatech
Innovation in Pharmaceutical Engineering

In-line Safety Sieve

FlexiSieve™



Why should I use a safety sieve?

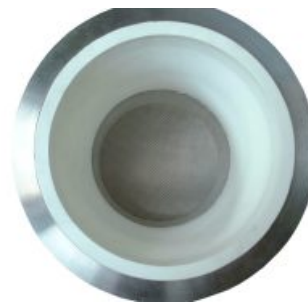
A Safety Sieve is used to screen materials at the start of processing. The screening process will remove any large lumps or foreign bodies.

The Pharmatech FlexiSieve™ is designed to be installed in-line and so will be completely dust free during operation.

Can you afford not to use a FlexiSieve™?

- ✓ Ensure Product Quality
- ✓ Help Product Flow
- ✓ Help prevent batch failure
- ✓ Save Money

Why vibrate the whole machine when only the mesh needs to be vibrated?



Interior of the Flexisieve

The FlexiSieve™ Concept

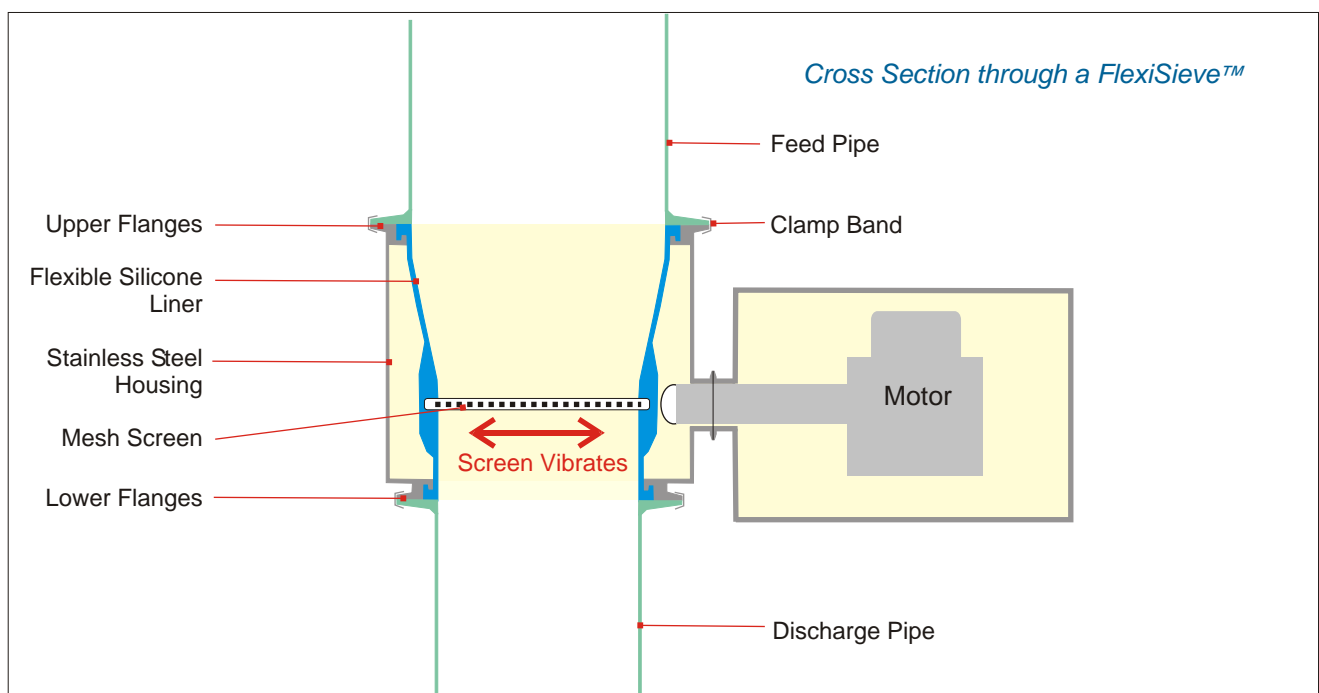
The Pharmatech FlexiSieve™ is a new concept in safety sieving. Other sieves vibrate the whole machine, this makes it very hard to have a dust tight connection and also makes the machine very noisy.

The concept behind the FlexiSieve™ is to only vibrate the mesh screen. The mesh is housed in a flexible silicone liner and is vibrated horizontally by a motor.

The silicone liner is trapped between two flanges and is secured by a clampband.

The device is designed to be clamped *in-line* and is designed to be *dust-free* during operation. The FlexiSieve™ only requires a small motor and so is quiet during operation.

The silicone liner and mesh (the product contact parts) are designed to be quickly and easily changed between batches.





The Standard Flexisieve



The Flexisieve-QR

FlexiSieve™ Features

- Rugged all stainless steel construction
- Product contact parts 316 stainless steel and silicone rubber
- Quick changeover between batches
- High throughput
- Low noise
- Low maintenance
- GMP correct design
- CE marked

*Dust Free In-line
Safety Sieving*

Flexisieve-QR

The Quick Release FlexiSieve™ allows the sieve head to be quickly disconnected from the drive unit.



The use of clampbands allows The FlexiSieve™ to be quickly and easily dismantled for cleaning.



Contaminated parts can be easily bagged and removed for cleaning

Typical Applications

The compact size of the FlexiSieve makes it easy to engineer into an existing line or plan it in to a new one.



FlexiSieve™ on a mobile hoist



*FlexiSieve™ under a sack opening station.
Note. Vacuum Transfer pick up under FlexiSieve™*



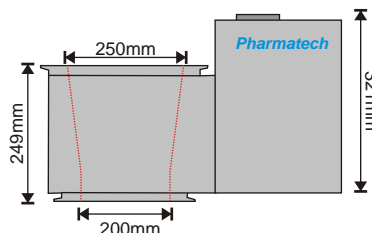
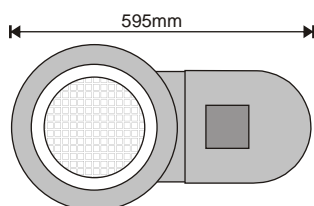
FlexiSieve™ on a Mobile Drum Hoist/Inverter



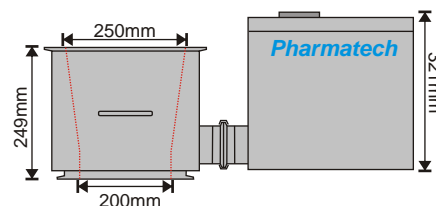
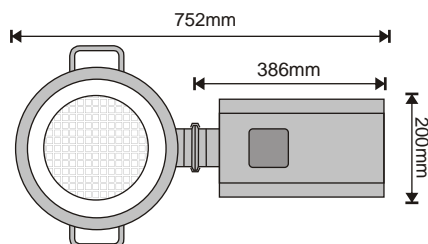
FlexiSieve™ on a Drum Hoist/Inverter

Technical

Standard FlexiSieve



FlexiSieve QR



Standard FlexiSieve™

Dimensions:	See drawing
Weight:	25kg Approx.
Power Supply:	230v 50Hz 1phase

FlexiSieve-QR

Dimensions:	See drawing
Total Weight:	30kg (approx.)
Weight of sieving head:	15kg (approx.)
Power Supply:	230v 50Hz 1phase

Silicone Liner

One piece silicone liner made from FDA acceptable, white silicone rubber.

Liner conforms to FDA standard 177.2600



Mesh Screens

Manufactured from 316 stainless steel. Seals have a silicone edge.

Standard sizes are 40 or 60 mesh (other sizes are available on request)



Pharmatech Hoists



- Ideal for use with a FlexiSieve™
- Loads up to 4 Tonnes
- Columns up to 17m in height
- Able to handle loads of any shape
- Custom designed
- Hydraulic or electro-mechanical operation
- Validation documentation

Contact us for a brochure showing the full range

Further Information?

Contact us for further information about the Pharmatech FlexiSieve™.

Pharmatech are suppliers and manufacturers of specialist processing and handling equipment for the pharmaceutical and other hygiene conscious industries.

www.pharmatech.co.uk